



**JESUS PEIRO**  
COMPLEMENTOS / *Accessories*



TOCADOS / *Headpieces*



T17 - 43 / F



T17 - 44 / F



T17 - 45 / F



T17 - 46 / F



T17 - 47 / F



T17 - 48 / F



T17 - 49 / F

TOCADOS **DIADEMA VELO y PUNZONES** / *Headpieces Veil headdress and Bodkins*



DV17 - 12 / F



DV17 - 50 / F



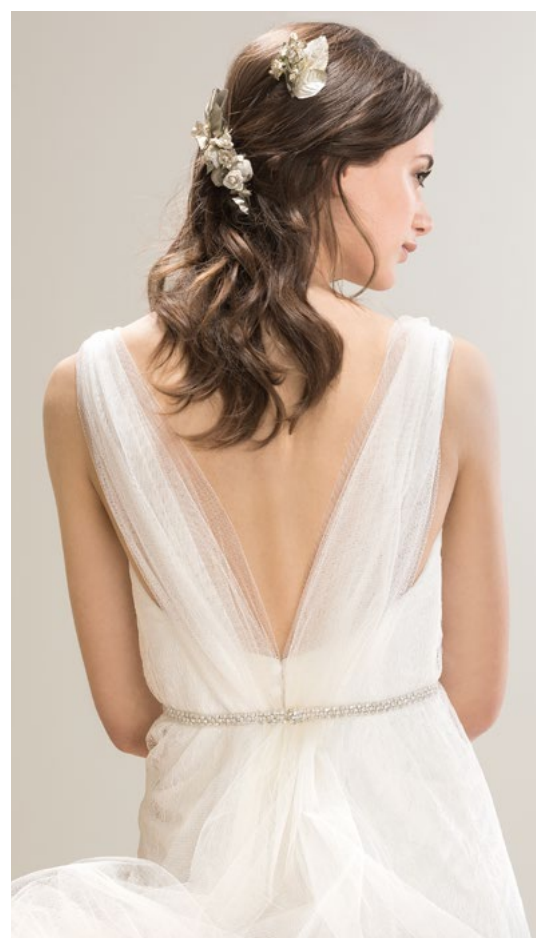
DV17 - 51 / F



DV17 - 53 / F



DV17 - 52 / F



C17 - 20 / F



C17 - 13 / F



C17 - 19 / F



C17 - 14 / F



C17 - 15 / F

TOCADOS **DIADEMAS y CORONAS SOFT** / *Soft Headpieces Tiaras & Crowns*



DS17 - 01 / F



DS17 - 02 / F



DS17 - 03 / F



DS17 - 04 / F



DS17 - 21 / F



KS17 - 32 / F



KS17 - 33 / F



KS17 - 34 / F



KS17 - 35 / F



TOCADOS **CORONAS** / *Headpieces Crowns*



K17 - 05 / F



K17 - 06 / F



K17 - 07 / F



K17 - 23 / F



K17 - 24 / F



K17 - 25 / F



K17 - 26 / F



K17 - 27 / F



K17 - 28 / F



K17 - 29 / F



K17 - 30 / F



K17 - 31 / F

TOCADOS **GUARNALDAS** / *Headpieces Garlands*



G17 - 08 / F



G17 - 09 / F



G17 - 10 / F



G17 - 11 / M



GS17 - 40 / F



G17 - 36 / M



G17 - 37 / F



GS17 - 41 / F



G17 - 38 / F



G17 - 39 / F



GS17 - 42 / F





JOYAS **PULSERAS** / *Jewels Bracelets*



PUL17 - 01/JP



PUL17 - 02/JP



PUL17 - 03/JP



JOYAS **COLLARES** / *Jewels Necklaces*



COL17 - 01/JP



COL17 - 02/JP

JOYAS TEXTILES / *Embellished Tops*



B 207A *Ladurée*



B 208A *Petissú*



B 209A *Cognac*

PRENDAS DE PUNTO **BOLEROS** / *Knitwear Boleros*



B 500B

B 1000A



B 500 CANDY



B 500 PEARL



B 503A



B 503 CUFF



B 503 TIE



B 505 DANCE

PRENDAS DE PUNTO **BOLEROS** / *Knitwear Boleros*



B 506 TWIST

**CAPAS** / *Cloaks*



B 508A



B 509A



B 510A

PRENDAS DE PUNTO **ECHARPES** / *Shrugs*



B 507A



B 501A



B 501A PEARL

CINTURONES / Belts



CINT 17/02A SKY



CINT 17/01A ALMOND



CINT 17/03A MINT



CINT 17/04A BUBBLE





## APLICACIONES / *Applique*



AC17 - 54/F



AC17 - 55/F



## ALPARGATAS Y ZAPATOS / *Espadrilles and Shoes*



ZA10 - 001



AL16 - 001 RASO



AL16 - 002 PIQUÉ



AL17 - 006 CREP



NUESTROS **VELOS** / *Our Veils*

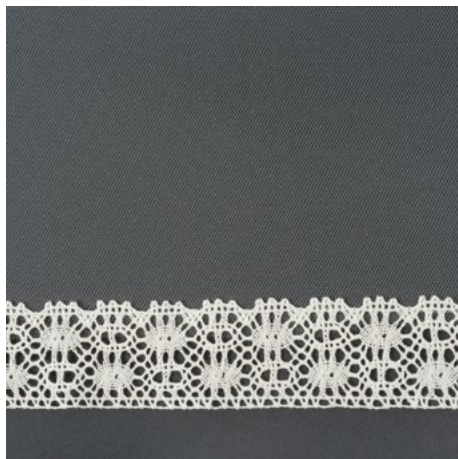


VELOS BORDADOS / *Embroidered Veils*

V - BOUQUET



V - BANDA AZAHAR



V - RUSTICO



V - RINGO



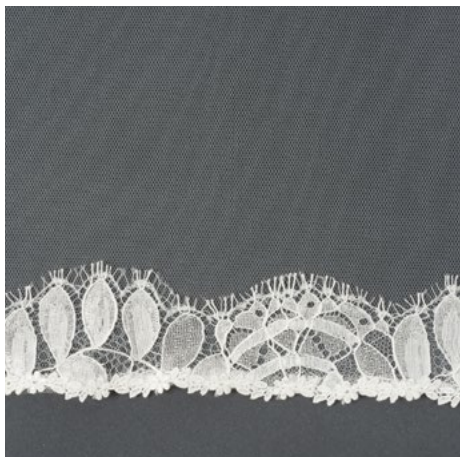
VELOS **CHANTILLY** y ENCAJES / *Chantilly and Lace Veils*



V - SWEET



V - PAVLOVA



V - MINILAUREL



V - MOUSSE DOLCE



V - PRIMAVERA



VELOS **CLÁSICOS** / *Classic Veils*



V - PERFIL RASO



V - PERFIL SEDA



V - ORGANDÍ



V - MAXI-PERFIL SEDA



V - VALIA

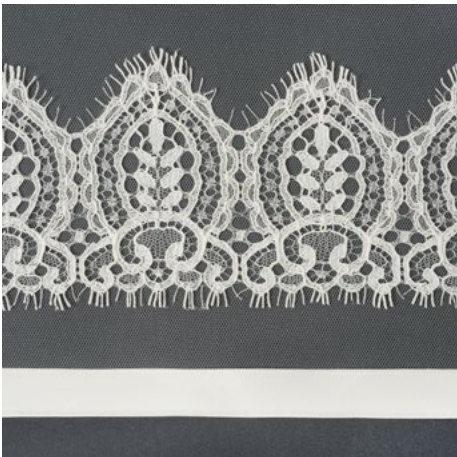


V - SOFT MOUSSE



VELOS MIXTOS PERFILES / *Veils*

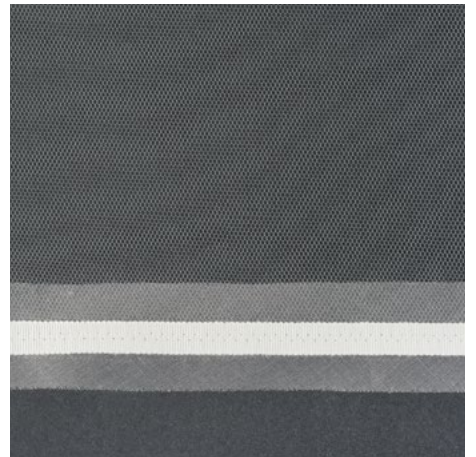
V - ELOISSE



V - GAGARIN



V - DOBLE PERFIL



V - PERFIL-GROGAIN






[WWW.JESUSPEIRO.COM](http://WWW.JESUSPEIRO.COM)

#JPaccessories

 @jesuspeiroofficial

 jesuspeiro